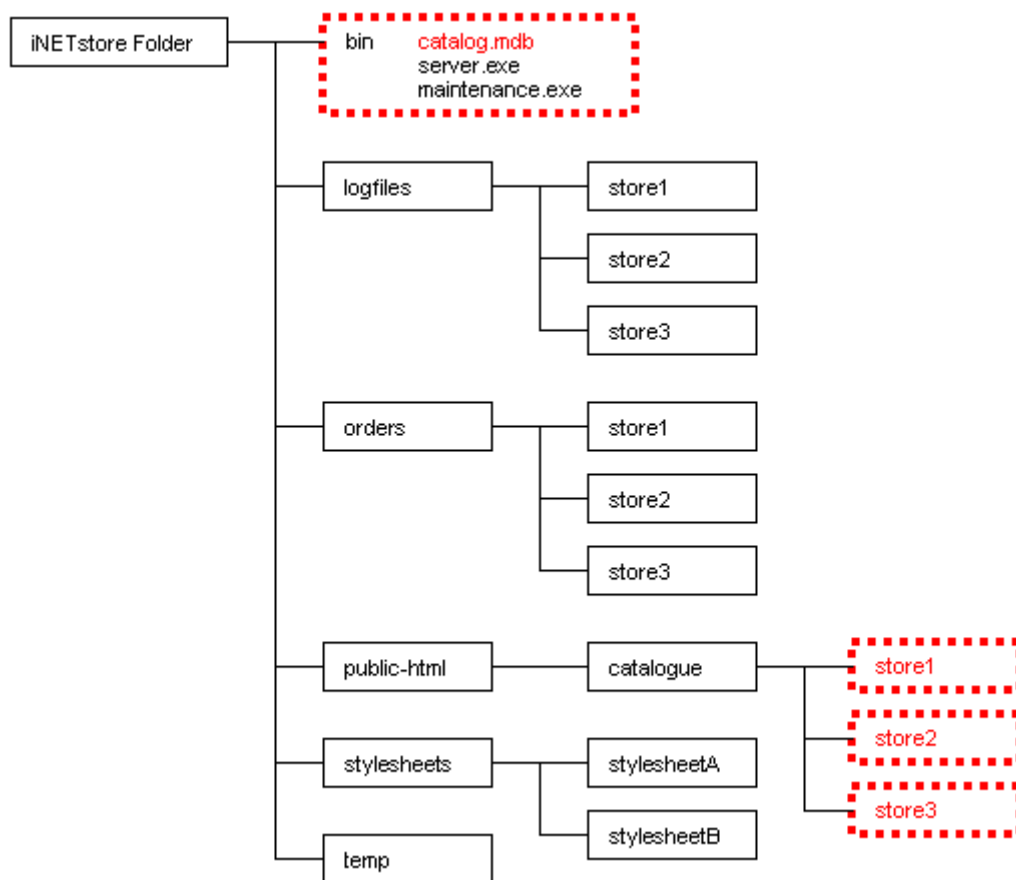


22. Backing Up and Relocating Your Store

Like all important data on your computer it is wise to back up your iNETstore data from time to time. You may also wish to move your iNETstore from one computer to another (such as when transferring from a development machine to the maintenance machine). The instructions in this section will help you back up and relocate your data.

Making a Backup Of Your Template And Data



Your store is basically made up of two parts:

- The files and images - usually located in c:\Program Files\iNETstore\public-html\catalogue\storename (where store name is the name of your store). These are the actual pages and pictures that make up the look of your store.
- The data in the database - called catalog.mdb located in c:\Program Files\iNETstore\bin. This is the information on your products and company.

To make a backup copy of your iNETstore all you need to do is copy your stores' directory and the catalog.mdb file to a safe place.

If you have been updating any of your store via Browser Based Maintenance or utilize a User and Transaction table it is important that you perform a Get From Server prior to backing up your files.

Relocating your iNETstore to a different Machine or Drive.

If you wish to relocate your iNETstore, to another machine or drive you should first follow the steps above to backup your iNETstore, you should then:

- Install a fresh version of iNETstore onto the new machine or drive. DO NOT try to copy the entire iNETstore directory from machine to another machine as it will not work correctly; the software must be installed.
- After completing the installation you can copy the catalog.mdb and your stores' directory into the new installation, they should be copied into the same location that they were backed up from, that is the 'bin' directory for the catalog.mdb file and the 'catalogue' directory for your stores directory. DO NOT delete the backed up files until you are happy that your store is running well again, it is advisable to always keep a recent backup of your store in a safe location.
- Now start up iNETstore and ensure that your store is intact and working correctly.

Relocating To A Different ISP

Should you ever need to move your iNETstore to a different ISP or web hosting company you should follow these step-by-step instructions:

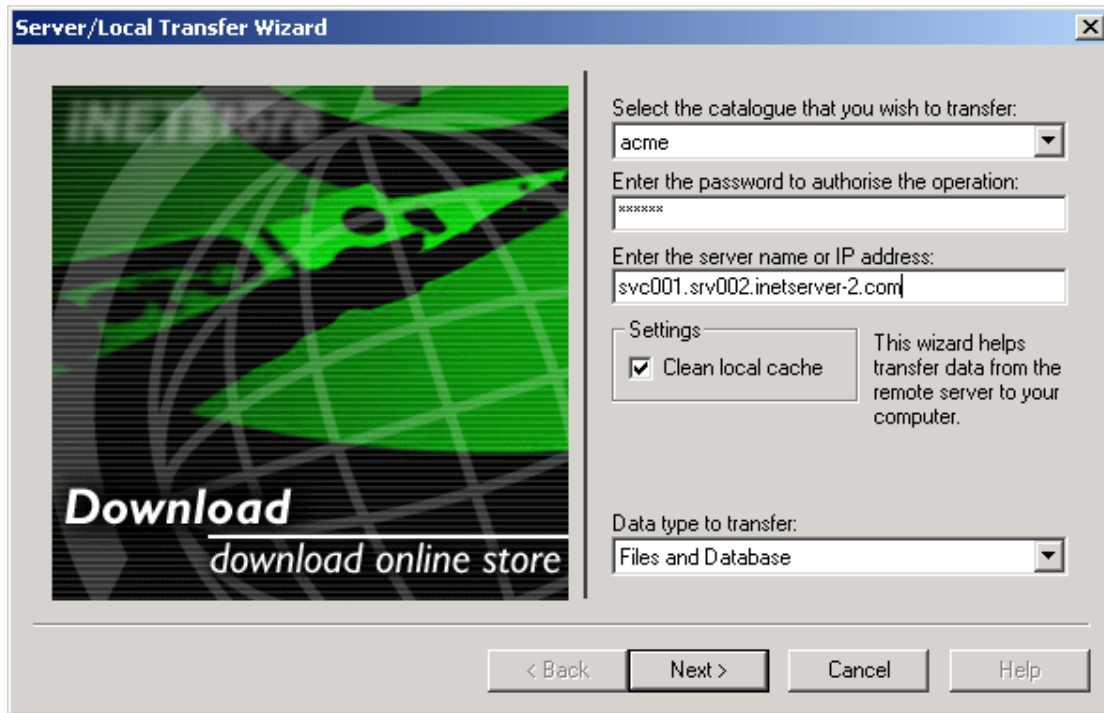
- Ensure you have all details you need from your new web hosting company.
- Perform a Get From Server (see below) from your old hosting company to ensure you have the latest data for your store.
- Perform a Send to Server - don't forget to enter a new server or IP address and the new password assigned to you by your web hosting company.
- Change any web pages that point to your iNETstore, so that they now point to your new iNETstore address.

Getting Your Store From The Server

You can use the iNETstore Get From Server Wizard to download your store from the Internet. To do this, select 'Get From Server' from the 'File' menu.

It is highly recommended that you make a backup of your store before downloading data using the get from server wizard.

The following screen shots show the process step by step:



First, you need to enter your account details:

- Select the store you would like to download from the pull-down menu.
- Enter your password.
- Enter the server name or IP address of your hosting account.
- Select the data type to transfer:
 - Database Only: Only data will be transferred. For example, you may select this option if you have made changes to your store using the browser based maintenance system and you would like to download these changes to your local computer. Often you may also like to download the TRN (transaction) and USR (user) tables from the server as these will usually have more up to date information in them than on your own machine.
 - Files and Database: Both files and your data will be transferred. For example, this is useful if you have lost the copy of your store on your local machine and you would like to download the one on the server.

Click on 'Next' when finished.

Server/Local Transfer Wizard

Local Server URLs (only used during get from server)

HTTP

HTTPS

Remote Server URL (only used during send to server)

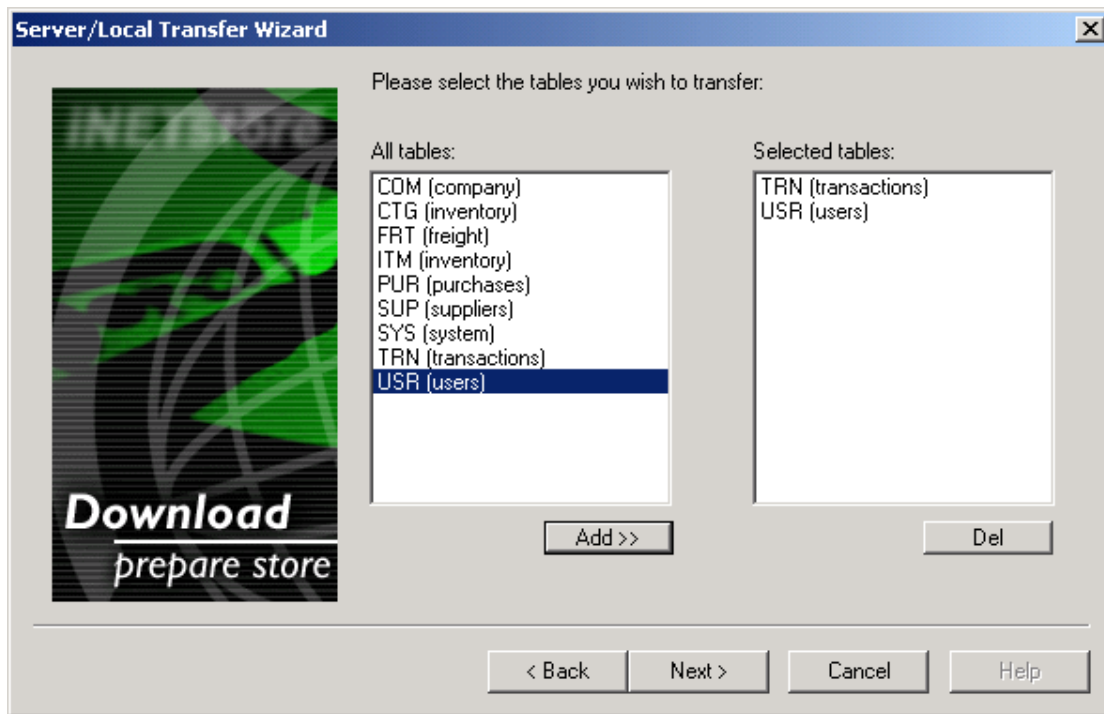
HTTP

HTTPS

Please enter the secure server and non secure server URLs at your ISP.
The HTTP URLs should be of the form `http://www.servername.com/` or `http://www.servername.com/catalogue/storename/`
The HTTPS URLs should be of the form `https://secure.servername.com/` or `https://secure.servername.com/catalogue/storename/`
These URLs are entered into the system table during send to server and get from server.

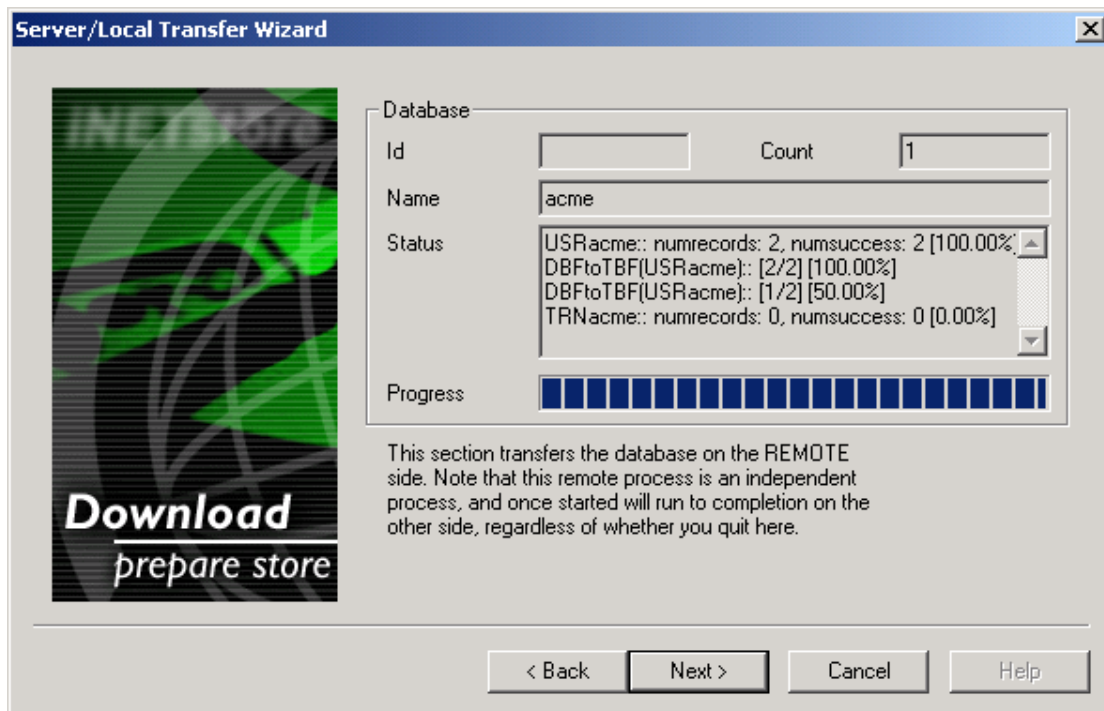
< Back Next > Cancel Help

Unless you were given specific instructions to use this screen with the template you used then you should ignore this step and click Next. All the standard templates that ship with Studio 2001 do not use this feature.



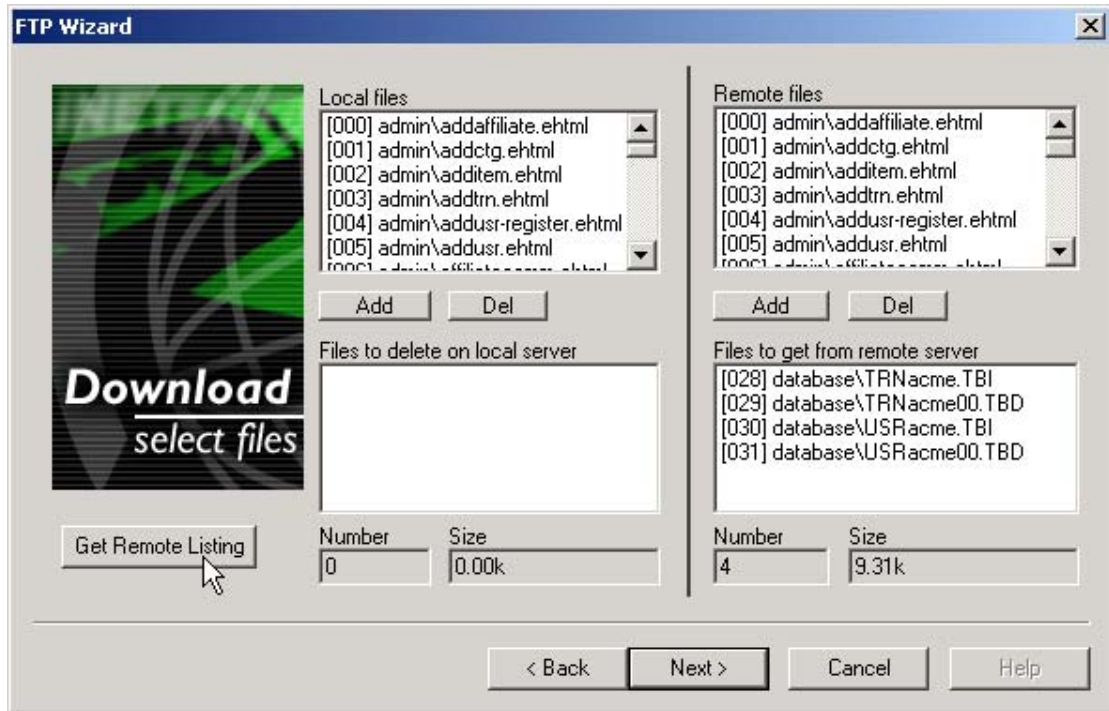
You can now select the tables you would like to download. Select the tables that you would like to download from the list on the left hand side and click 'Add'.

Click 'Next' when finished.



Click on Start to transfer the database on the remote side. This means that the iNETstore Server will pull all relevant data out of the remote database and put it into text files in the database directory on the remote server. These text files are later downloaded to the local machine.

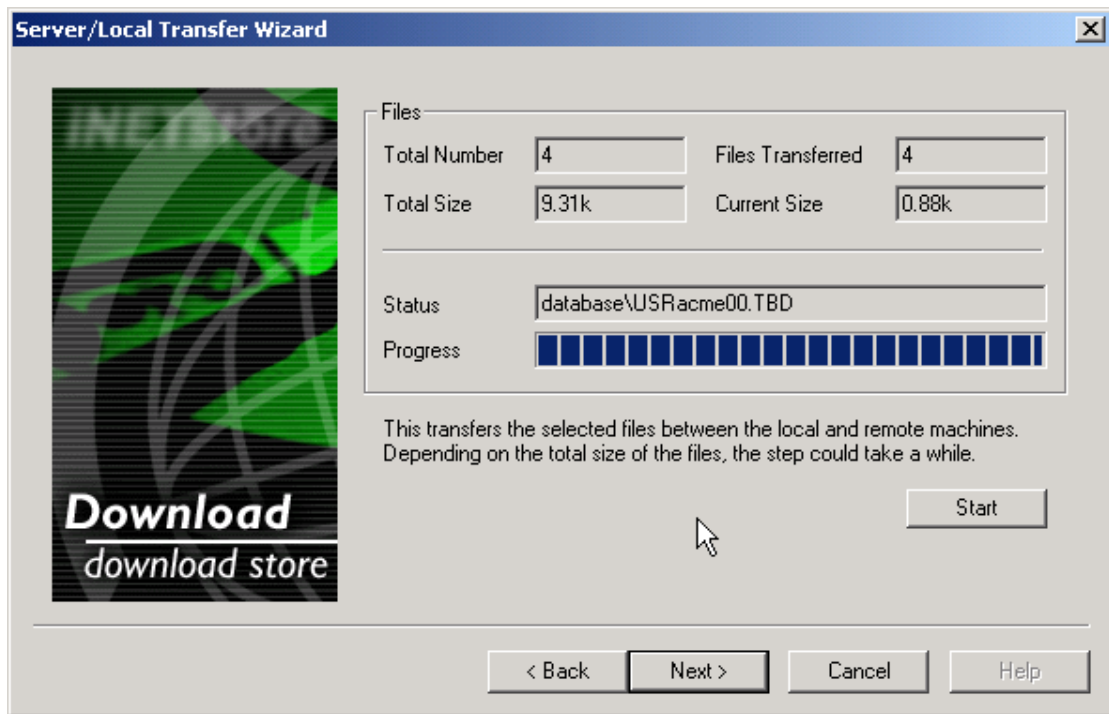
When the process has finished and the Next button is highlighted again click Next.



You can now select all files you would like to download.

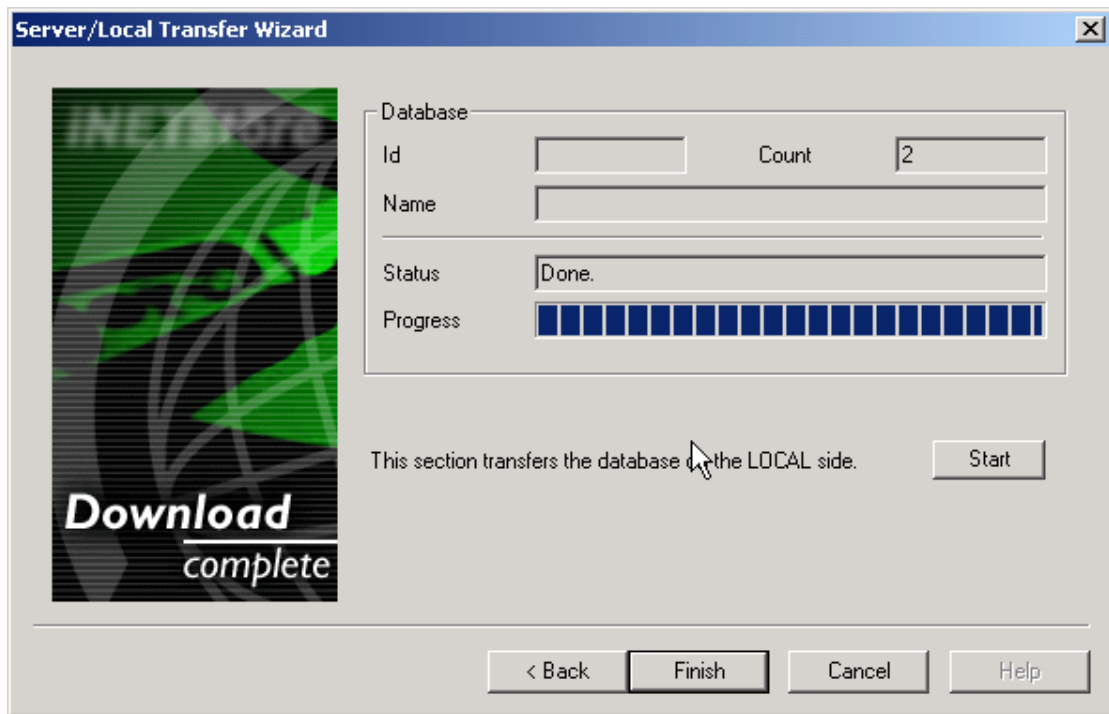
1. Click on 'Get Remote Listing' to retrieve a list of all files on the remote server.
2. Select the files you would like to download.

When finished, click on 'Next' to continue.



Click Start to commence downloading the selected files.

When the process has finished, click on 'Next' to continue.



All data in the remote database has now been downloaded to your local machine. It is stored in text files (files with .tbi and .tbd extensions) in the 'database' directory of your store. The server will need to pull the data out of these files and put them into your local database. Click on the 'Start' button to start this process.

When completed, click on 'Finish'.

Your store should now have been successfully downloaded from the server.